

# PORT SALERNO PARK MINOR PLAT

A RESUBDIVISION OF PART OF THE SOUTH 2/15 OF LOTS 18, 19, AND 20 OF THE COMMISSIONERS' SUBDIVISION OF THE MILES OR HANSON GRANT, P.B. 1, PG. 11, MARTIN COUNTY PUBLIC RECORDS.

### CLERK'S RECORDING CERTIFICATE

I, LOUISE V. ISAACS, CLERK OF THE CIRCUIT COURT OF MARTIN COUNTY, FLORIDA, HEREBY CERTIFY THAT THIS PLAT WAS FILED FOR RECORD IN PLAT BOOK 5, PAGE 79, MARTIN COUNTY, FLORIDA, PUBLIC RECORDS, THIS 11<sup>TH</sup> DAY OF MAY, 1973.

LOUISE V. ISAACS, CLERK  
CIRCUIT COURT  
MARTIN COUNTY, FLORIDA  
BY: *[Signature]*  
DEPUTY CLERK

FILE NO. 193622

### CERTIFICATE OF OWNERSHIP

BOARD OF COUNTY COMMISSIONERS OF MARTIN COUNTY, FLORIDA, AND FRED J. LONGO AND BLANCH LONGO, HUSBAND AND WIFE, DO HEREBY CERTIFY ON THE DATE OR DATES INDICATED THAT THEY ARE THE OWNERS OF THE PROPERTY DESCRIBED HEREON.

BOARD OF COUNTY COMMISSIONERS  
MARTIN COUNTY, FLORIDA  
5/10/73 *[Signature]*  
DATE TIMER E. POWERS, CHAIRMAN  
May 4, 1973 *[Signature]*  
DATE LOUISE V. ISAACS, COUNTY CLERK  
May 4, 1973 *[Signature]*  
DATE FRED J. LONGO, INDIVIDUALLY, AND AS TRUSTEE.  
May 4, 1973 *[Signature]*  
DATE BLANCHE LONGO, WIFE

### TITLE CERTIFICATION

I, STEPHEN B. CALVERT, A MEMBER OF THE FLORIDA BAR, HEREBY CERTIFY THAT:  
1. APPARENT RECORD TITLE IS IN THE CORPORATION AND PERSONS WHICH EXECUTED THE CERTIFICATE OF OWNERSHIP HEREON.  
2. ALL MORTGAGES NOT SATISFIED OR RELEASED OF RECORD ENCUMBERING THE LAND DESCRIBED AS FOLLOWS: NONE.  
DATED THIS 30 DAY OF April, 1973.

*[Signature]*  
STEPHEN B. CALVERT  
ATTORNEY AT LAW  
P.O. BOX 1590  
STUART, FLORIDA 32494

THE NORTH 1/2 OF THE SOUTH 4/5 OF LOTS 18 AND 19 OF THE COMMISSIONERS' SUBDIVISION OF "THE MILES OR HANSON GRANT," MARTIN COUNTY, FLORIDA, PLAT BOOK 1, PAGE 11, MARTIN COUNTY PUBLIC RECORDS, FLORIDA

### APPROVAL OF COUNTY

THIS PLAT IS HEREBY APPROVED BY THE UNDERSIGNED ON THE DATE OR DATES INDICATED.

May 9, 1973 *[Signature]*  
DATE COUNTY ENGINEER  
4-30-73 *[Signature]*  
DATE COUNTY ATTORNEY  
May 9, 1973 *[Signature]*  
DATE DIRECTOR

PLANNING AND ZONING COMMISSION  
MARTIN COUNTY, FLORIDA

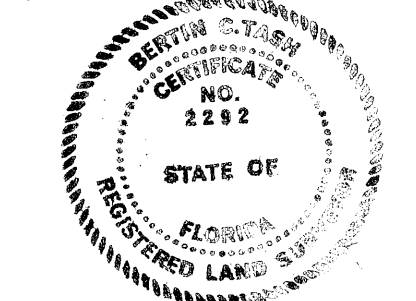
### DESCRIPTION

THAT PART OF THE SOUTH 2/15 OF LOTS 18, 19, AND 20, OF THE COMMISSIONERS' SUBDIVISION OF THE MILES OR HANSON GRANT, ACCORDING TO THE PLAT THEREOF RECORDED IN PLAT BOOK 1, PAGE 11, PALM BEACH, NOW MARTIN COUNTY, FLORIDA, PUBLIC RECORDS, WHICH LIES WESTERLY OF THE WESTERLY RIGHT-OF-WAY LINE OF THE FLORIDA EAST COAST RAILWAY AND WHICH LIES EASTERLY OF A STRAIGHT NORTHWESTERLY CONTINUATION OF THE CENTERLINE OF SEVENTH STREET, AS THE SAME IS SHOWN ON THE PLAT OF PORT SALERNO IN PLAT BOOK 1, PAGE 132, PALM BEACH, NOW MARTIN COUNTY, FLORIDA, PUBLIC RECORDS, AND ALSO AS SHOWN ON THE PLAT OF SALERNO, DATED AUGUST 17 TH, 1927 AND RECORDED IN PLAT BOOK 1, PAGE 75, MARTIN COUNTY, FLORIDA, PUBLIC RECORDS.

### SURVEYOR'S CERTIFICATE

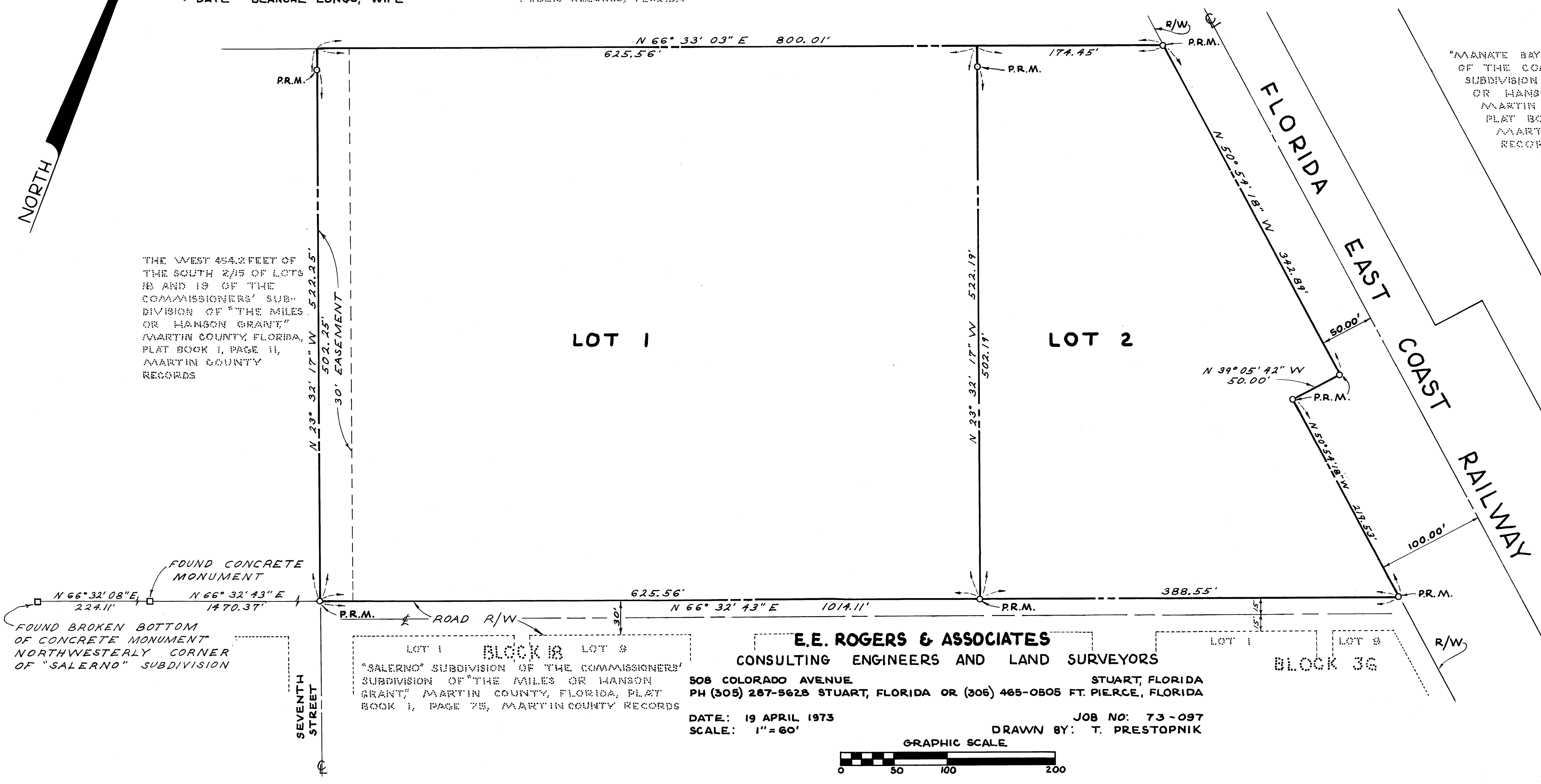
I, BERTIN C. TASH, DO HEREBY CERTIFY THAT THIS PLAT OF PORT SALERNO PARK MINOR PLAT, A RESUBDIVISION OF PART OF THE SOUTH 2/15 OF LOTS 18, 19, AND 20 OF THE COMMISSIONERS' SUBDIVISION OF THE MILES OR HANSON GRANT, MARTIN COUNTY, FLORIDA, RECORDED IN PLAT BOOK 1, PAGE 11, MARTIN COUNTY PUBLIC RECORDS, IS A TRUE AND CORRECT REPRESENTATION OF THE LANDS SURVEYED, THAT THE SURVEY WAS MADE UNDER MY SUPERVISION, AND THAT THE SURVEY DATA COMPLIES WITH ALL OF REQUIREMENTS OF CHAPTER 177 FLORIDA STATUTES.

*[Signature]*  
BERTIN C. TASH  
FLORIDA SURVEYOR REGISTRATION NO. 2292



### NOTES

ALL BEARINGS SHOWN HEREON ARE ASSUMED  
LOT 1 = 7.50 ACRES  
LOT 2 = 3.45 ACRES  
PR.M. - O - DENOTES PERMANENT REFERENCE MONUMENT



THE WEST 454.2 FEET OF THE SOUTH 2/15 OF LOTS 18 AND 19 OF THE COMMISSIONERS' SUBDIVISION OF "THE MILES OR HANSON GRANT," MARTIN COUNTY, FLORIDA, PLAT BOOK 1, PAGE 11, MARTIN COUNTY RECORDS

"MANATEE BAY" SUBDIVISION OF THE COMMISSIONERS' SUBDIVISION OF "THE MILES OR HANSON GRANT," MARTIN COUNTY, FLORIDA, PLAT BOOK 2, PAGE 75, MARTIN COUNTY, RECORDS.

FOUND CONCRETE MONUMENT  
FOUND BROKEN BOTTOM OF CONCRETE MONUMENT NORTHWESTERLY CORNER OF "SALERNO" SUBDIVISION

LOT 1 BLOCK 18 LOT 9  
"SALERNO" SUBDIVISION OF THE COMMISSIONERS' SUBDIVISION OF "THE MILES OR HANSON GRANT," MARTIN COUNTY, FLORIDA, PLAT BOOK 1, PAGE 75, MARTIN COUNTY RECORDS

E.E. ROGERS & ASSOCIATES  
CONSULTING ENGINEERS AND LAND SURVEYORS

508 COLORADO AVENUE STUART, FLORIDA  
PH (305) 267-5628 STUART, FLORIDA OR (305) 465-0505 FT. PIERCE, FLORIDA

DATE: 19 APRIL 1973 JOB NO: 73-097  
SCALE: 1" = 60' DRAWN BY: T. PRESTOPNIK

